

BS EN ISO 10545-13:2016



BSI Standards Publication

Ceramic tiles

Part 13: Determination of chemical resistance (ISO 10545-13:2016)

bsi.

<http://www.china-gauges.com/>

National foreword

This British Standard is the UK implementation of EN ISO 10545-13:2016. It supersedes BS EN ISO 10545-13:1997 which is withdrawn.

The UK participation in its preparation was entrusted to Technical Committee B/539, Ceramic tiles and other rigid tiling.

A list of organizations represented on this committee can be obtained on request to its secretary.

This publication does not purport to include all the necessary provisions of a contract. Users are responsible for its correct application.

© The British Standards Institution 2016.
Published by BSI Standards Limited 2016

ISBN 978 0 580 81801 1

ICS 91.100.23

Compliance with a British Standard cannot confer immunity from legal obligations.

This British Standard was published under the authority of the Standards Policy and Strategy Committee on 31 December 2016.

Amendments/corrigenda issued since publication

Date	Text affected
------	---------------

EUROPEAN STANDARD

EN ISO 10545-13

NORME EUROPÉENNE

EUROPÄISCHE NORM

December 2016

ICS 91.100.23

Supersedes EN ISO 10545-13:1997

English Version

Ceramic tiles - Part 13: Determination of chemical
resistance (ISO 10545-13:2016)

Carreaux et dalles céramiques - Partie 13:
Détermination de la résistance chimique (ISO 10545-
13:2016)

Keramische Fliesen und Platten - Teil 13: Bestimmung
der chemischen Beständigkeit (ISO 10545-13:2016)

This European Standard was approved by CEN on 28 October 2016.

CEN members are bound to comply with the CEN/CENELEC Internal Regulations which stipulate the conditions for giving this European Standard the status of a national standard without any alteration. Up-to-date lists and bibliographical references concerning such national standards may be obtained on application to the CEN-CENELEC Management Centre or to any CEN member.

This European Standard exists in three official versions (English, French, German). A version in any other language made by translation under the responsibility of a CEN member into its own language and notified to the CEN-CENELEC Management Centre has the same status as the official versions.

CEN members are the national standards bodies of Austria, Belgium, Bulgaria, Croatia, Cyprus, Czech Republic, Denmark, Estonia, Finland, Former Yugoslav Republic of Macedonia, France, Germany, Greece, Hungary, Iceland, Ireland, Italy, Latvia, Lithuania, Luxembourg, Malta, Netherlands, Norway, Poland, Portugal, Romania, Slovakia, Slovenia, Spain, Sweden, Switzerland, Turkey and United Kingdom.



EUROPEAN COMMITTEE FOR STANDARDIZATION
COMITÉ EUROPÉEN DE NORMALISATION
EUROPÄISCHES KOMITEE FÜR NORMUNG

CEN-CENELEC Management Centre: Avenue Marnix 17, B-1000 Brussels

European foreword

This document (EN ISO 10545-13:2016) has been prepared by Technical Committee ISO/TC 189 "Ceramic tile" in collaboration with Technical Committee CEN/TC 67 "Ceramic tiles" the secretariat of which is held by UNI.

This European Standard shall be given the status of a national standard, either by publication of an identical text or by endorsement, at the latest by June 2017 and conflicting national standards shall be withdrawn at the latest by June 2017.

Attention is drawn to the possibility that some of the elements of this document may be the subject of patent rights. CEN [and/or CENELEC] shall not be held responsible for identifying any or all such patent rights.

This document supersedes EN ISO 10545-13:1997.

According to the CEN-CENELEC Internal Regulations, the national standards organizations of the following countries are bound to implement this European Standard: Austria, Belgium, Bulgaria, Croatia, Cyprus, Czech Republic, Denmark, Estonia, Finland, Former Yugoslav Republic of Macedonia, France, Germany, Greece, Hungary, Iceland, Ireland, Italy, Latvia, Lithuania, Luxembourg, Malta, Netherlands, Norway, Poland, Portugal, Romania, Slovakia, Slovenia, Spain, Sweden, Switzerland, Turkey and the United Kingdom.

Endorsement notice

The text of ISO 10545-13:2016 has been approved by CEN as EN ISO 10545-13:2016 without any modification.

<http://www.china-gauges.com/>

Contents

	Page
Foreword	iv
1 Scope	1
2 Normative references	1
3 Terms and definitions	1
4 Principle	1
5 Aqueous test solutions	1
5.1 Household chemicals.....	1
5.2 Swimming pool salts.....	1
5.3 Acids and alkalis.....	1
5.3.1 Low concentrations (L).....	1
5.3.2 High concentrations (H).....	2
6 Apparatus	2
7 Test specimens	2
7.1 Number of test specimens.....	2
7.2 Size of test specimens.....	3
7.3 Preparation of test specimens.....	3
8 Procedure	3
8.1 Application of test solutions.....	3
8.2 Determination of class.....	4
8.2.1 General.....	4
8.2.2 Normal classification.....	4
8.2.3 Alternative visual classification.....	4
9 Test report	5
Bibliography	9

<http://www.china-gauges.com/>

Foreword

ISO (the International Organization for Standardization) is a worldwide federation of national standards bodies (ISO member bodies). The work of preparing International Standards is normally carried out through ISO technical committees. Each member body interested in a subject for which a technical committee has been established has the right to be represented on that committee. International organizations, governmental and non-governmental, in liaison with ISO, also take part in the work. ISO collaborates closely with the International Electrotechnical Commission (IEC) on all matters of electrotechnical standardization.

The procedures used to develop this document and those intended for its further maintenance are described in the ISO/IEC Directives, Part 1. In particular, the different approval criteria needed for the different types of ISO documents should be noted. This document was drafted in accordance with the editorial rules of the ISO/IEC Directives, Part 2 (see www.iso.org/directives).

Attention is drawn to the possibility that some of the elements of this document may be the subject of patent rights. ISO shall not be held responsible for identifying any or all such patent rights. Details of any patent rights identified during the development of the document will be in the Introduction and/or on the ISO list of patent declarations received (see www.iso.org/patents).

Any trade name used in this document is information given for the convenience of users and does not constitute an endorsement.

For an explanation on the meaning of ISO specific terms and expressions related to conformity assessment, as well as information about ISO's adherence to the World Trade Organization (WTO) principles in the Technical Barriers to Trade (TBT) see the following URL: www.iso.org/iso/foreword.html.

The committee responsible for this document is ISO/TC 189, *Ceramic tile*.

This second edition cancels and replaces the first edition (ISO 10545-13:1995), which has been technically revised.

A list of all parts in the ISO 10545 series can be found on the ISO website.

<http://www.china-gauges.com/>

Ceramic tiles —

Part 13:

Determination of chemical resistance

1 Scope

This document specifies a test method for determining the chemical resistance of ceramic tiles at room temperature. The method is applicable to all types of ceramic tiles.

2 Normative references

The following documents are referred to in the text in such a way that some or all of their content constitutes requirements of this document. For dated references, only the edition cited applies. For undated references, the latest edition of the referenced document (including any amendments) applies.

ISO 3585, *Borosilicate glass 3.3 — Properties*

3 Terms and definitions

No terms and definitions are listed in this document.

ISO and IEC maintain terminological databases for use in standardization at the following addresses:

- IEC Electropedia: available at <http://www.electropedia.org/>
- ISO Online browsing platform: available at <http://www.iso.org/obp>

4 Principle

Subjection of the test specimens to the action of the test solutions and visual determination of attack after a defined period.

5 Aqueous test solutions

5.1 Household chemicals

Ammonium chloride solution, 100 g/l.

5.2 Swimming pool salts

Sodium hypochlorite solution, 20 mg/l, prepared from technical grade sodium hypochlorite solution 5 % (W/V).

5.3 Acids and alkalis

5.3.1 Low concentrations (L)

- a) Hydrochloric acid solution, 3 % (V/V), prepared from concentrated hydrochloric acid ($\rho = 1,19$ g/ml).
- b) Citric acid solution, 100 g/l.

- c) Potassium hydroxide solution, 30 g/l.

5.3.2 High concentrations (H)

- a) Hydrochloric acid solution, 18 % (V/V), prepared from concentrated hydrochloric acid ($\rho = 1,19$ g/ml).
- b) Lactic acid solution, 5 % (V/V) prepared from 85 % lactic acid.
- c) Potassium hydroxide solution, 100 g/l.

For special cases, other test solutions may, upon agreement of the parties concerned, be tested using the procedure specified in this document. For these cases no requirement is applicable.

6 Apparatus

6.1 Vessel with a lid, made of borosilicate glass 3.3 (ISO 3585) or any other suitable material.

6.2 Cylinder of borosilicate glass 3.3 (ISO 3585) or any other suitable material having a lid or an opening for filling.

6.3 Drying oven, capable of being operated at $(110 \pm 5)^\circ\text{C}$.

Microwave, infrared or other drying systems allowing shorter drying times may be used provided that it has been determined that the same results are obtained.

6.4 Chamois lather.

6.5 White cloth, made of cotton or flax.

6.6 Sealing material (for example, plasticine).

6.7 Balance, accurate to 0,05 g.

6.8 Pencil, of HB hardness (or equivalent).

NOTE For more information, see ISO 9177-2^[1].

6.9 Electric lamp, of 40 W, white inside (for example, siliconized).

7 Test specimens

7.1 Number of test specimens

The minimum number of test specimens is reported in [Table 1](#). Test specimens shall be representative of the sample. Where tiles have different colours or decorative effects on parts of the surface, care should be taken to include all distinctive parts.

Table 1 — Number of test specimens

Tile Maximum area, A (cm^2)	Total n° of test specimens (tiles)
$200 < A \leq 3\,600$	3
$A > 3\,600$	3
When A is $\leq 200 \text{ cm}^2$, the total no of test specimens (tiles) should be sufficient to cover an area of 200 cm^2 .	

7.2 Size of test specimens

Use undamaged test specimens which may be either whole tiles or parts of tiles.

For procedure with partial immersion, cut a square test specimen ($50 \text{ mm} \times 50 \text{ mm}$) from each tile under test.

7.3 Preparation of test specimens

Thoroughly clean the surface with a suitable solvent, for example, ethanol. Do not use test specimens with surface defects.

8 Procedure

8.1 Application of test solutions

Dry each test specimens in the drying oven (6.3) maintained over $105 \text{ }^\circ\text{C} \pm 5 \text{ }^\circ\text{C}$ during at least 2 h and then cool them until they reach room temperature. Test specimens shall be tested not later than 3 h after they have reached room temperature.

Apply a uniform layer of the sealing material (6.6) 3 mm thick to the rim of the cylinder (6.2). Turn the cylinder upside down onto a fresh part of the proper surface and seal around the rim. Pour the test solution through the inlet to a height of $(20 \pm 1) \text{ mm}$.

If it is not practical to maintain a constant level of solution, immerse the test specimens vertically to a depth of 25 mm in the vessel (6.1) containing the test solution. Cover with the lid (6.1).

The test solution shall be all of those listed in 5.1, 5.2 and 5.3.1; if required, the test solutions listed in 5.3.2 may be used.

Maintain the test assembly at $(20 \pm 5) \text{ }^\circ\text{C}$.

For testing the resistance to household chemicals, swimming pool salts and citric acid, maintain the test solutions in contact with the test specimen for 24 h. Remove the cylinder and clean the proper surface with a suitable solvent to completely remove the sealing material. When the procedure by partial immersion is used, maintain the test solutions in contact with the test specimens for 24 h, then remove the test specimens.

For testing the resistance to hydrochloric acid, lactic acid and potassium hydroxide, maintain the test solution in contact with the test specimen for a total of $(96 \pm 1) \text{ h}$. Ensure that the level of the test solution does not change. Replace the test solution after $(48 \pm 1) \text{ h}$. After more $(48 \pm 1) \text{ h}$, remove the cylinder and clean the surface with a suitable solvent to completely remove the sealing material.

When the procedure by partial immersion is followed, maintain the test solutions in contact with the test specimens for $(96 \pm 1) \text{ h}$, then remove the test specimens.

Thoroughly rinse the specimens under running water for a period of 10 min to remove any residual testing solution. If needed, clean the surface with a soft bristle brush to remove test solutions.

Dry each test specimens in the drying oven maintained over $105\text{ }^{\circ}\text{C} \pm 5\text{ }^{\circ}\text{C}$ and cool to room temperature before evaluation.

8.2 Determination of class

8.2.1 General

In order to assess whether the pencil test (described in 8.2.2.2) is applicable, draw several lines with the pencil (6.8) on untreated parts of the proper face of the tile and attempt to remove the marks with a wet cloth (6.5).

If the pencil marks cannot be removed, the classification system of Figure 1 is not applicable and these tiles shall be reported as "Normal classification not possible". An alternative visual classification is provided for these tiles in 8.2.3.

8.2.2 Normal classification

For tiles passing the pencil test, carry out the operations described in 8.2.2.1, 8.2.2.2 and 8.2.2.3 and apply the classification system indicated in Figure 1.

8.2.2.1 Visual examination

Examine the proper surface that has been tested from all angles from a standard distance of 25 cm and under a minimum artificial illumination of $300\text{ lx} \pm 10\text{ lx}$, with the naked eye or with spectacles if usually worn, for any difference in appearance from a untreated surface, for example, for change in colour, reflection, surface texture or the development of brilliance. After examination, if there is no visible effect, perform the pencil test described in 8.2.2.2. If there is a visible effect, perform the reflection test described in 8.2.2.3.

8.2.2.2 Pencil test

Draw several lines with the pencil (6.8) both on the surface under test and on the untreated surface. Attempt to remove the pencil lines with the wet cloth (6.5). If the pencil marks are removed from the treated surface, the surface corresponds to class A. If they are not removed, the surface corresponds to class B.

8.2.2.3 Reflection test

Hold the tile so that the image of the lamp (6.9) is reflected on the untreated surface. The angle of incidence of the light upon the surface shall be approximately 45° and the distance between the tile and the light source shall be $(350 \pm 100)\text{ mm}$. The criterion of judgement shall be the sharpness of the reflection and not the brightness of the surface. Position the tile so that the image falls simultaneously on both treated and untreated parts and determine whether it is any less clear on the treated part. This test cannot be applied to certain proper surfaces, in particular, those which are dull. In this case, the procedure reported in 8.2.3 shall be used. If the reflection is clear, the surface corresponds to class B. If the reflection is blurred, the surface corresponds to class C.

8.2.3 Alternative visual classification

For tiles failing the pencil test and reported as "Normal classification not possible", carry out the operations described below and apply the classification system indicated in Figure 2.

Examine the surface that has been tested from all angles from a standard distance of 25 cm and under a minimum artificial illumination of $300\text{ lx} \pm 10\text{ lx}$, with the naked eye or with spectacles if usually worn, for any difference in appearance from a untreated surface, for example, for change in reflection or the development of brilliance. Use the following classification.

8.2.3.1 For test solutions listed in 5.1 and 5.2

Class A(V): No visible effect

Class B(V): Discernable visible change in appearance

Class C(V): Partial or complete loss of the original surface appearance

NOTE (V) signifies "visual classification".

8.2.3.2 For test solutions listed in 5.3.1

Class LA(V): No visible effect

Class LB(V): Discernable change in appearance

Class LC(V): Partial or complete loss of the original surface appearance

8.2.3.3 For test solutions listed in 5.3.2

If, as agreed, test solutions listed in 5.3.2 have been used, tiles are divided into the following classes:

Class HA(V): No visible effect

Class HB(V): Discernable change in appearance

Class HC(V): Partial or complete loss of the original surface appearance

9 Test report

The test report shall include the following information:

- a) a reference to this document, i.e. ISO 10545-13;
- b) a description of the tiles;
- c) the procedure followed: contact on proper surface or partial immersion;
- d) the test solutions used;
- e) the results obtained from the procedure described in 8.2;
- f) the classification for each test solution and for each test specimen.

Table 2 — Example of preparation of test solutions

Test solution	Reagent source	Amount of reagent required for test solution	Distilled water required for test solution
Ammonium chloride, 100 g/l	99,5 % ammonium chloride	100 g	Required to prepare 1 l of test solution
Citric acid solution, 100 g/l	99,5% citric acid	100 g	Required to prepare 1 l of test solution
Sodium hypochlorite solution, 20 mg/l	Technical grade sodium hypochlorite solution, 5 % (W/V)	0,4 mg	999,6 ml
Lactic acid, 5 % (V/V)	85 % lactic acid	50 ml	950 ml
Hydrochloric acid solution, 3 % (V/V)	38 % hydrochloric acid	30 ml	970 ml
Hydrochloric acid solution, 18 % (V/V)	38 % hydrochloric acid	180 ml	820 ml
Potassium hydroxide solution, 30 g/l	90 % potassium hydroxide	33,33 g	Required to prepare 1 l of test solution
Potassium hydroxide solution, 100 g/l	90 % potassium hydroxide	111 g	Required to prepare 1 l of test solution

<http://www.china-gauges.com/>

Licensed copy: University of Auckland Library. Version correct as of 27/02/2017

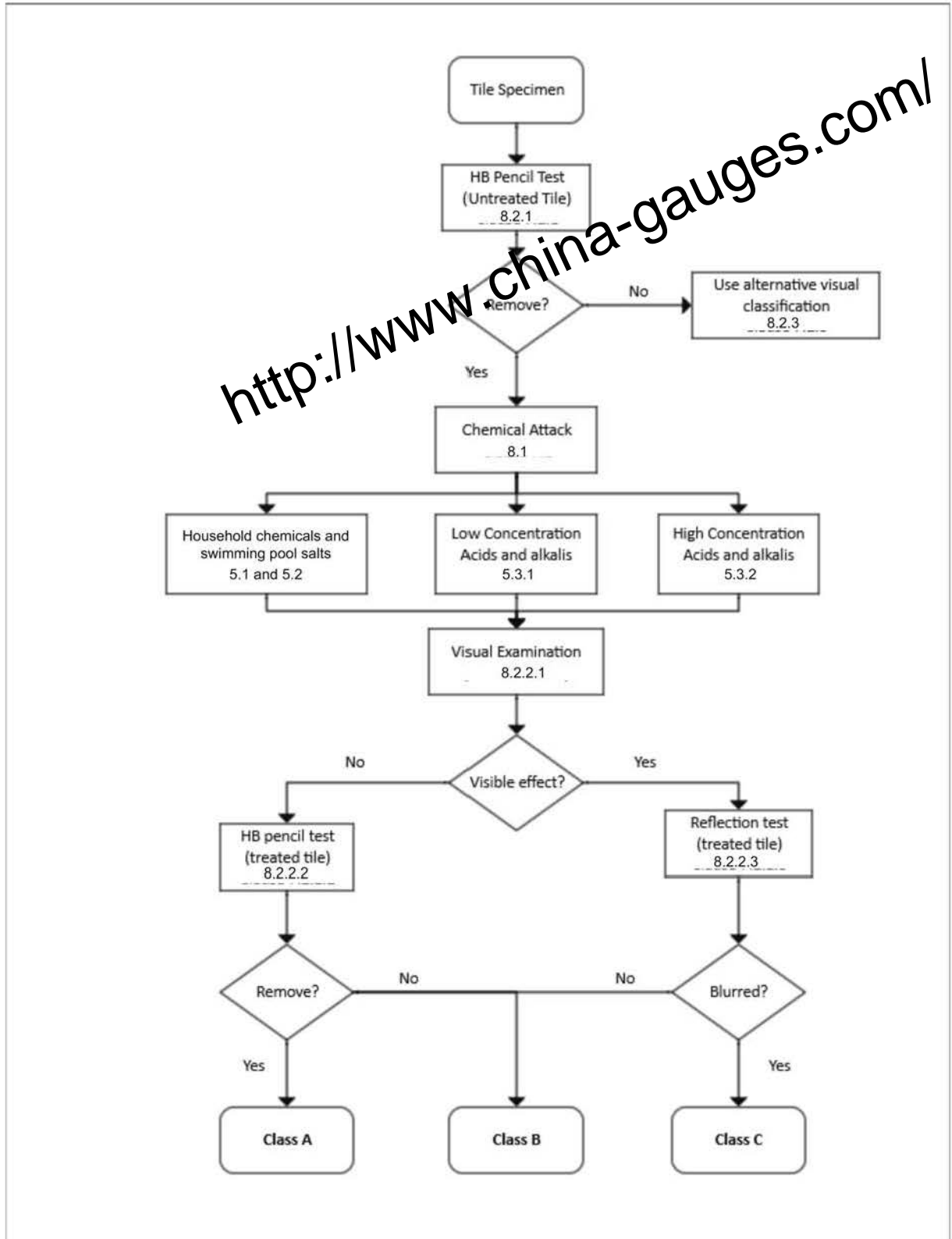


Figure 1 — Classification for the chemical resistance of ceramic tiles — Normal classification

<http://www.china-gauges.com/>

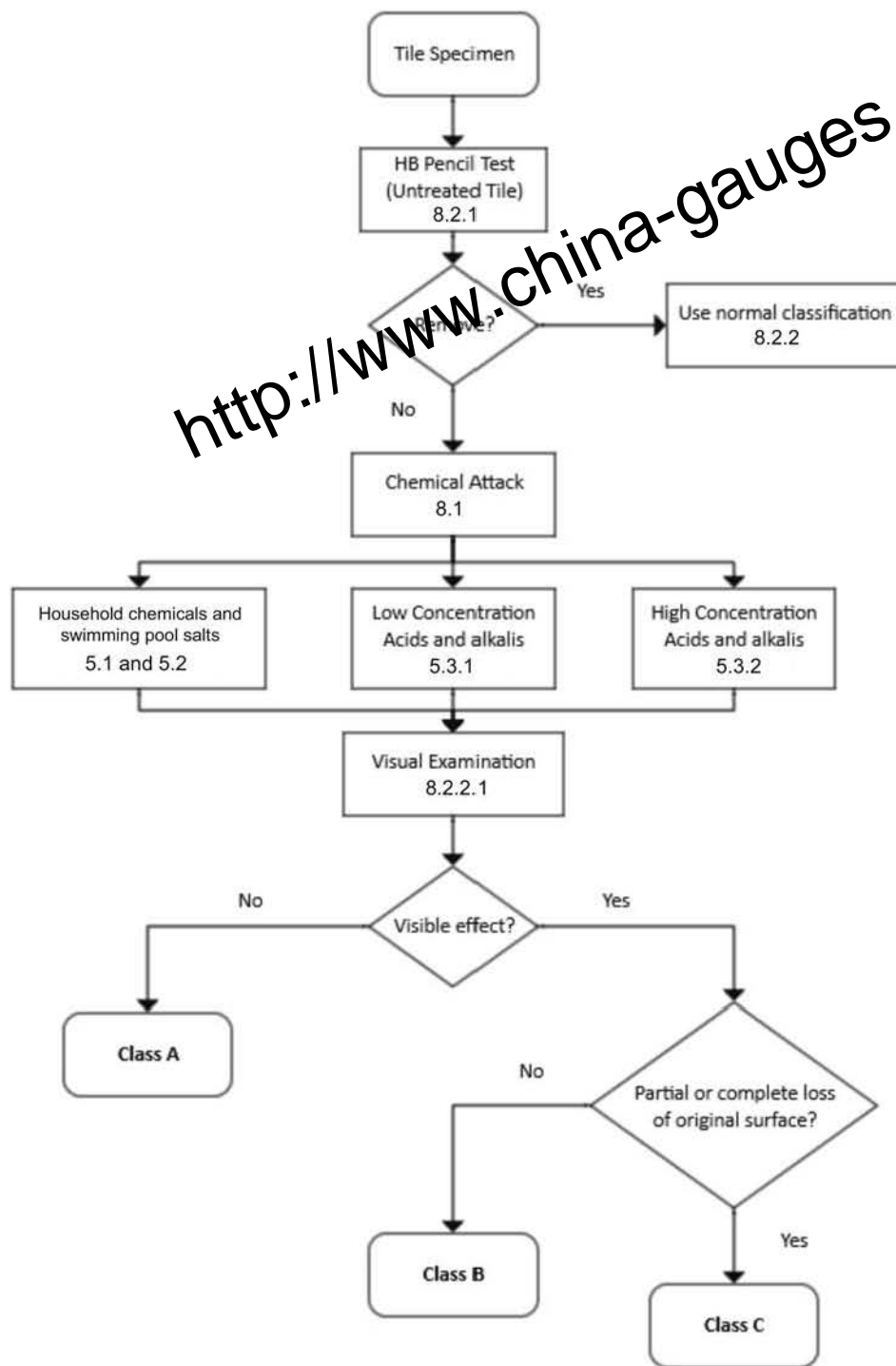


Figure 2 — Classification for the chemical resistance of ceramic tiles — Alternative visual classification

Bibliography

- [1] ISO 9177-2, *Mechanical pencils — Part 2: Black leads — Classification and dimensions*

<http://www.china-gauges.com/>

<http://www.china-gauges.com/>

<http://www.china-gauges.com/>

British Standards Institution (BSI)

BSI is the national body responsible for preparing British Standards and other standards-related publications, information and services.

BSI is incorporated by Royal Charter. British Standards and other standardization products are published by BSI Standards Limited.

About us

We bring together business, industry, government, consumers, innovators and others to shape their combined experience and expertise into standards-based solutions.

The knowledge embodied in our standards has been carefully assembled in a dependable format and refined through our open consultation process. Organizations of all sizes and across all sectors choose standards to help them achieve their goals.

Information on standards

We can provide you with the knowledge that your organization needs to succeed. Find out more about British Standards by visiting our website at bsigroup.com/standards or contacting our Customer Services team or Knowledge Centre.

Buying standards

You can buy and download PDF versions of BSI publications, including British and adopted European and international standards, through our website at bsigroup.com/shop, where hard copies can also be purchased.

If you need international and foreign standards from other Standards Development Organizations, hard copies can be ordered from our Customer Services team.

Copyright in BSI publications

All the content in BSI publications, including British Standards, is the property of and copyrighted by BSI or some person or entity that owns copyright in the information used (such as the international standardization bodies) and has formally licensed such information to BSI for commercial publication and use.

Save for the provisions below, you may not transfer, share or disseminate any portion of the standard to any other person. You may not adapt, distribute, commercially exploit, or publicly display the standard or any portion thereof in any manner whatsoever without BSI's prior written consent.

Storing and using standards

Standards purchased in soft copy format:

- A British Standard purchased in soft copy format is licensed to a sole named user for personal or internal company use only.
- The standard may be stored on more than 1 device provided that it is accessible by the sole named user only and that only 1 copy is accessed at any one time.
- A single paper copy may be printed for personal or internal company use only.

Standards purchased in hard copy format:

- A British Standard purchased in hard copy format is for personal or internal company use only.
- It may not be further reproduced – in any format – to create an additional copy. This includes scanning of the document.

If you need more than 1 copy of the document, or if you wish to share the document on an internal network, you can save money by choosing a subscription product (see 'Subscriptions').

Reproducing extracts

For permission to reproduce content from BSI publications contact the BSI Copyright & Licensing team.

Subscriptions

Our range of subscription services are designed to make using standards easier for you. For further information on our subscription products go to bsigroup.com/subscriptions.

With **British Standards Online (BSOL)** you'll have instant access to over 55,000 British and adopted European and international standards from your desktop. It's available 24/7 and is refreshed daily so you'll always be up to date.

You can keep in touch with standards developments and receive substantial discounts on the purchase price of standards, both in single copy and subscription format, by becoming a **BSI Subscribing Member**.

PLUS is an updating service exclusive to BSI Subscribing Members. You will automatically receive the latest hard copy of your standards when they're revised or replaced.

To find out more about becoming a BSI Subscribing Member and the benefits of membership, please visit bsigroup.com/shop.

With a **Multi-User Network Licence (MUNL)** you are able to host standards publications on your intranet. Licences can cover as few or as many users as you wish. With updates supplied as soon as they're available, you can be sure your documentation is current. For further information, email subscriptions@bsigroup.com.

Revisions

Our British Standards and other publications are updated by amendment or revision.

We continually improve the quality of our products and services to benefit your business. If you find an inaccuracy or ambiguity within a British Standard or other BSI publication please inform the Knowledge Centre.

Useful Contacts

Customer Services

Tel: +44 345 086 9001

Email (orders): orders@bsigroup.com

Email (enquiries): cservices@bsigroup.com

Subscriptions

Tel: +44 345 086 9001

Email: subscriptions@bsigroup.com

Knowledge Centre

Tel: +44 20 8996 7004

Email: knowledgecentre@bsigroup.com

Copyright & Licensing

Tel: +44 20 8996 7070

Email: copyright@bsigroup.com

BSI Group Headquarters

389 Chiswick High Road London W4 4AL UK

<http://www.china-gauges.com/>